



**Maison
Nordique**



Trailerable camp

955, Route 111 Est,
La Sarre (Québec) J9Z 2X2

Phone : 819 787-6680
Toll-free : 1 888 780-6680

Courriel : info@maisonnordique.com

www.maisonnordique.com

INCLUDED :

STANDARD EQUIPMENTS

HEATING ELECTRICAL SYSTEM

35 000 BTU "EMPIRE" propane heating system
12 volt to 120 volt charger / converter with braker
Propane detector
12 volt lighting
Propane tank rack
12 volt pump system

INTERIOR EXTERIOR FINISHING

100% PVC sliding windows
Insulated 2" x 4" walls and 2" x 6" floors
White metal sheet exterior siding + colored trims
Roof with urethane insulation and elastomeric membrane
White prefinished interior wall pannels and vinyl floor tile

EQUIPMENTS

White melamine kitchen and bathroom cabinets whit molded countertop
Stainless steel sink
8 cu. ft. propane/Electrical refrigerator
12 volt stove vent
20" propane oven
30" monobloc fiberglass shower and complete bathroom cabinet
Bunk bed in mélamine
6 gallons heating water tank
2 X 63,5 gallons (240 L) watter tank

TRAILER

6' steel frame
Battery carrier
Running lights
Eletrical breaks
Spare wheel
Tandem Wheel type suspension
2 X 7000 pounds axles, 16" Torque/flex wheels



NOT INCLUDED :

OPTIONAL EQUIPEMENTS

- CSA option
- 12 volts battery and container
- Air conditioning unit
- Metal stairs sand landing
- Electric baseboard heatingkit (3 baseboards)
- Custom design
- Retractable door
- Fifth wheel or straight pole
- Water toilet and septic tank
- Viper toilet
- Sun-Mar composting toilet
- Tripod leveling kit



SOLAR SYSTEM KIT (SOLD WITH)

- 12 volts refrigerator
- 6 volts 2 battery
- 1 solar panel (295 watts, photovoltaic, polycrystalline)



MISCELLANEOUS

- Quality controle assured during each step of the building process
- Different sizes available (see plans)
- Custom plans
- Fast delivery

We are Abitibi-Témiscaming first modular home builder



Exterior door



STEEL DOOR

Supérieur quality white steel door

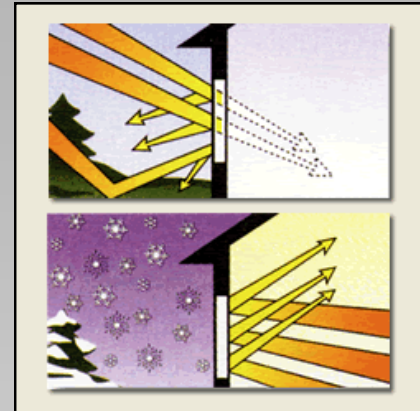
- 1 1/4" x 4 5/8" finger-jointed pine frame. The frame be clad in white vinyl;
- Double glazing with Low-E argon energy-efficient glass and PVC frame with screw-concealing strip on almost every model;
- "Celcolor" 1 3/4" superior quality white steel door finished with thermo-hardened polyester, insulated with polyurethane foam, 24-gauge steel, protective vinyl strip on teh lock jamb and standard 18" lock block;
- Standar hole for handle;
- **Includes:** hinges, white magnetic weather-stripping and compression, polyflex weather-stripping on 3 sides, insulated anodized aluminum sill and factory-installed adjustable bottom sweep.

Windows

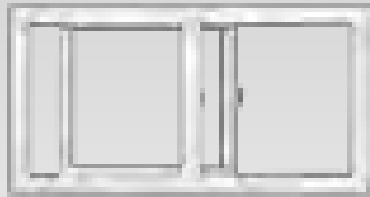
2607 – 6 1/2"

Designed to maximize condensation resistance, positioning the thermopane in the warm part of the wall.

- Made of one opening sash and a fix sash.
- It combines built-in exterior brickmould, which guards against water infiltration while positioning thermopane further towards the interior for exceptional performance.



PVC SLIDER



PVC HUNG



An elegant, high performance window system, built with high-end material and accessories, designed to enhance the appearance and energy efficiency of any home for years to come. Using the highest quality PVC resins and state-of-the-art extrusion technology, the 2000 series are made with distinctive gloss finish profiles specially designed to resist damage from dust and harmful UV rays.

- PVC materials are extruded into unique multi-chambered designed profiles providing maximum insulation benefits;
- Gloss finish to provide ultimate resistance against airborne pollutants and prevent dust from sticking to surface;
- 7/8" double insulated glass unit or 1 1/4" triple insulated glass (optional) for optimum insulation ;
- The screen;
- Clips attached;
- Triple seal protection at shutter.

Fifth wheel



Straight pole



Equipements

White melamine kitchen and bathroom cabinets whit molded countertop

Stainless steel sink



35 000 BTU “ EMPIRE” propane heating system



Equipements



12 volts stove vent

8'cu. ft. propane/electrical refrigerator
or
12 volts refrigerator for solar system

20'' propane oven

Équipement

Bunk bed in mélamine



Bathroom

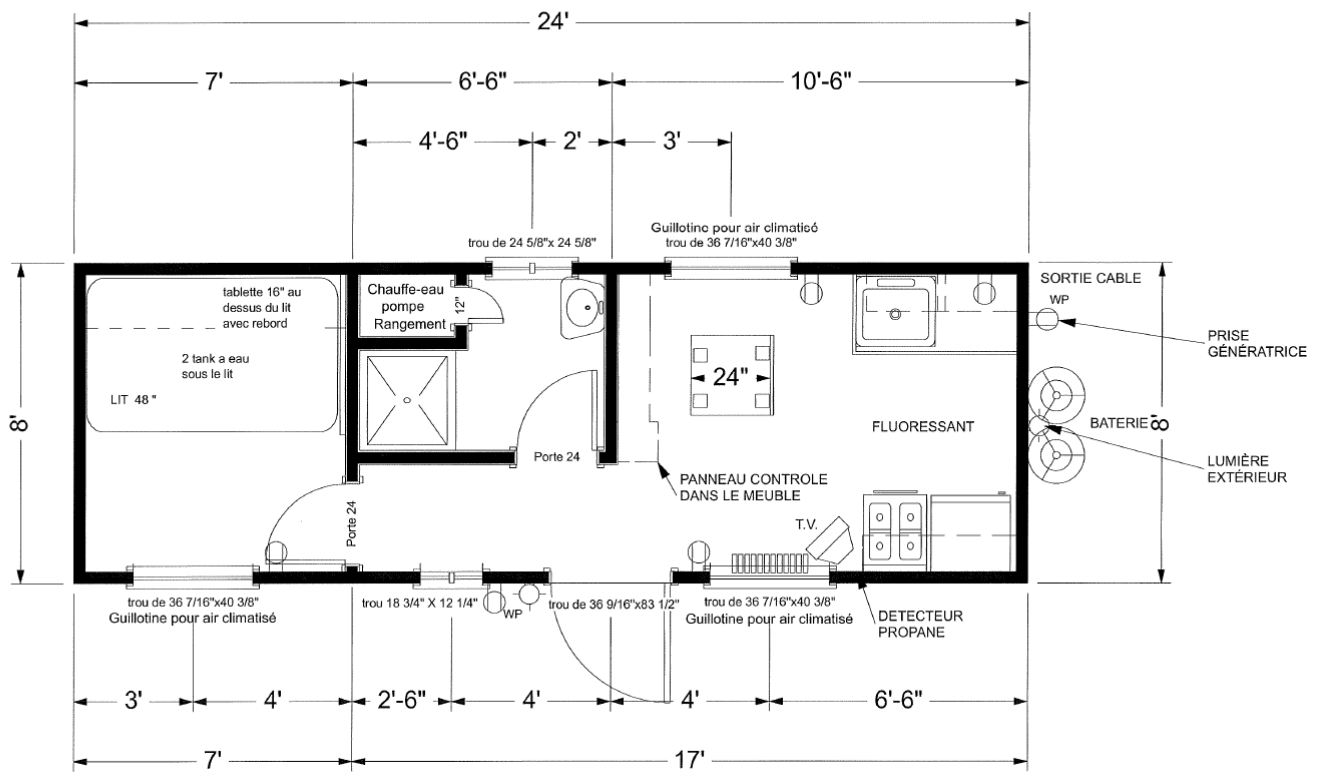
30'' monobloc fibreglass shower



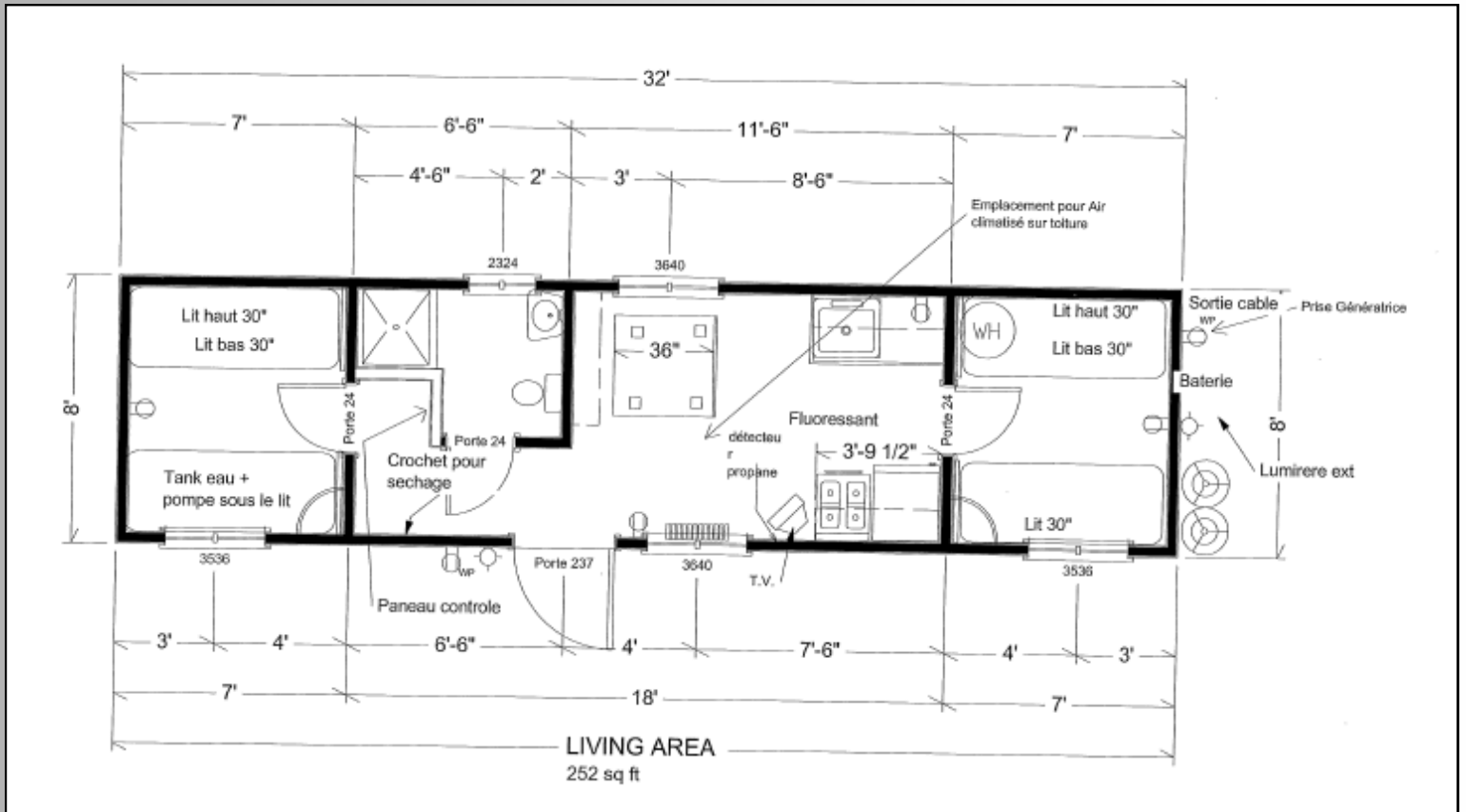
Complet bathroom cabinet



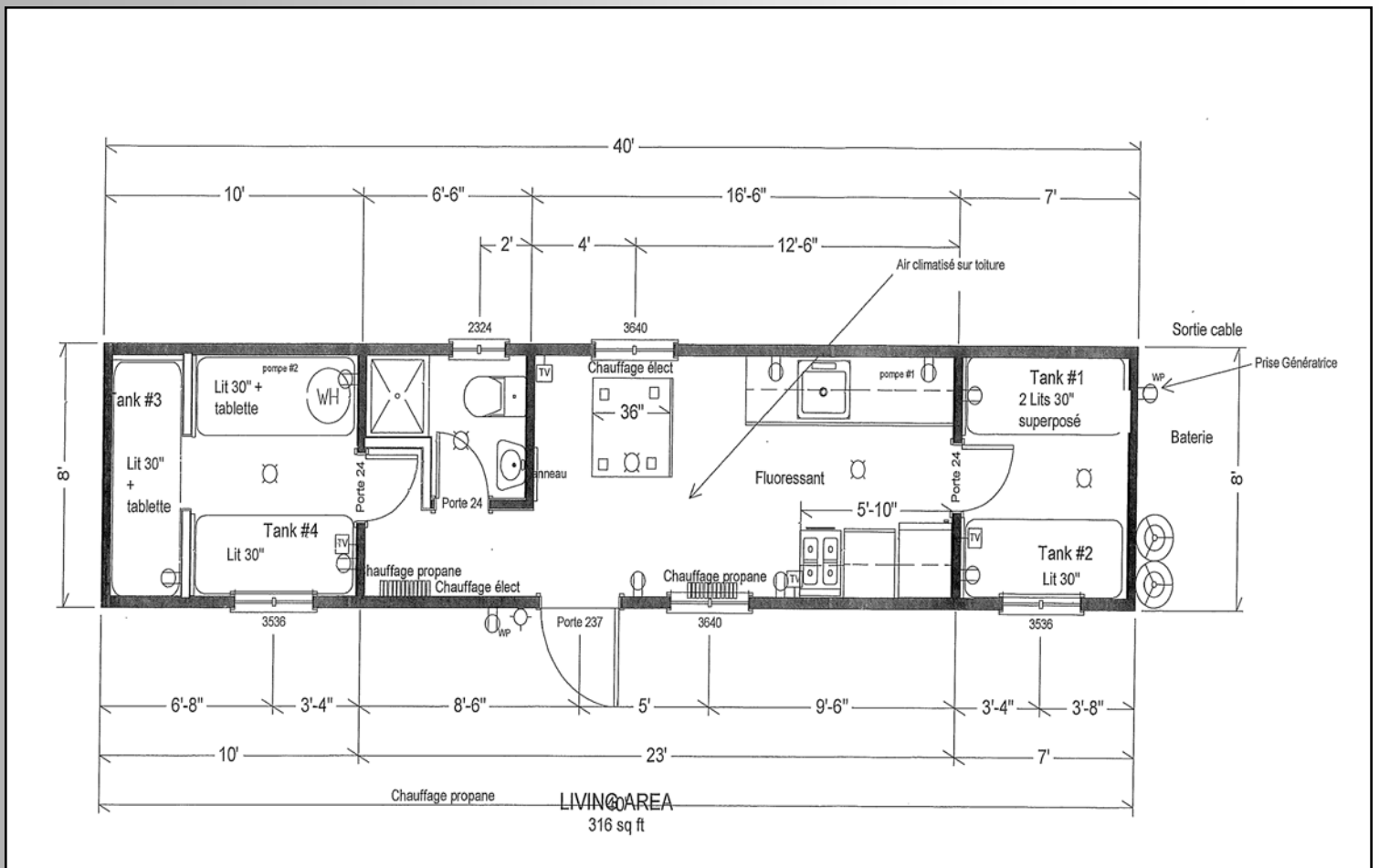
Plan 8' X 24'



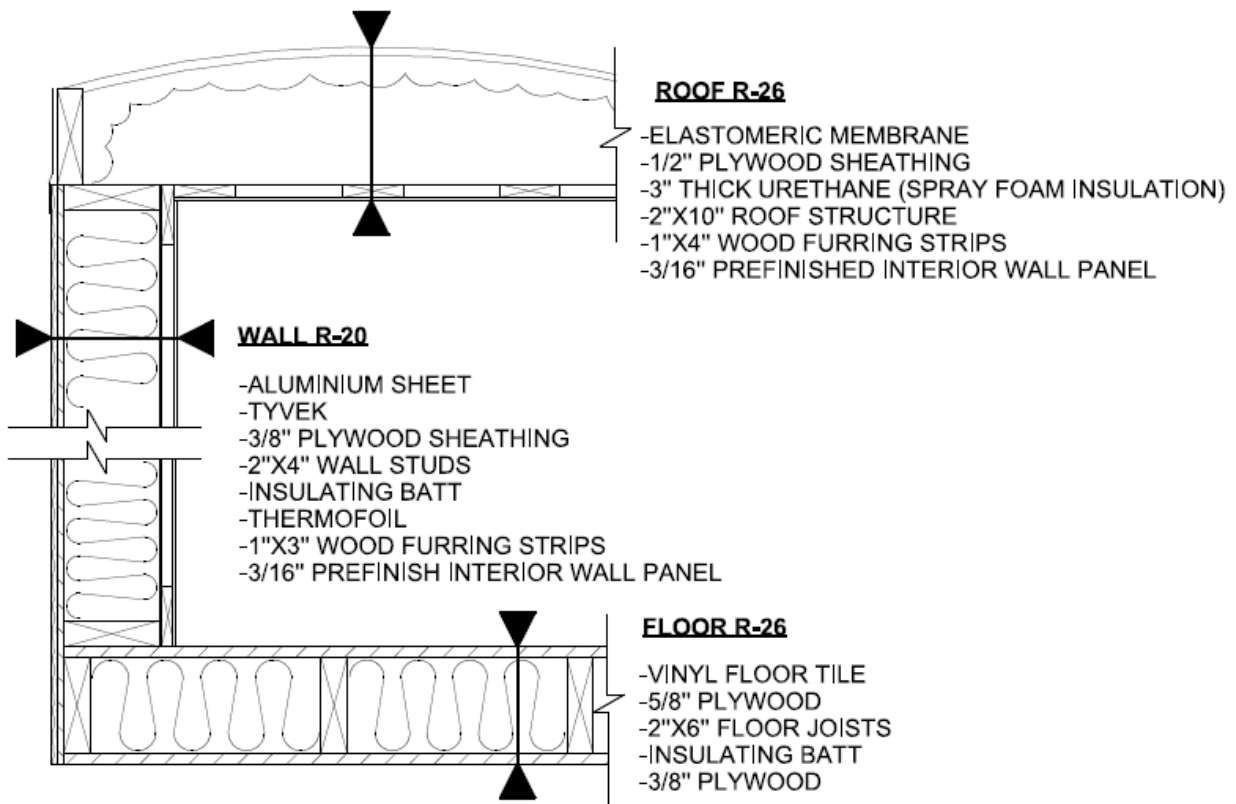
Plan 8' X 32'



Plan 8' X 40'



Wall section





**Maison
Nordique**

955, Route 111 Est,
La Sarre (Québec) J9Z 2X2

Phone : 819 787-6680

Toll-free : 1 888 780-6680

Email: info@maisonnordique.com

www.maisonnordique.com